



BOUTIQUE. CO  

---

SAUNDERS  
HOUSE  
EALING BROADWAY

---

## THE BOUTIQUE COLLECTION

---

Saunders House, 52-53 The Mall, Ealing, W5 3TA

---



## WELCOME TO SAUNDERS HOUSE

**1960s period architecture meets cutting-edge interior design at Saunders House, a flexible workplace across five floors in Ealing.**

Saunders House, situated on one of Ealing's main thoroughfares, is a well-connected, stylish, and feature-packed workplace. Original 1960s interior architecture merged with ultra-modern design touches create an environment that can't help but impress, and the functionality of the space within is just as spectacular. Filled with high-grade unbranded offices, luxurious meeting rooms, and a coffee-shop style business lounge, it's an ideal choice for businesses looking for a workplace that goes beyond the ordinary in Ealing.

Ealing became known as Queen of the Suburbs back in the early 20th century, splitting the difference between central London's hustle and bustle and the calming serenity of the countryside.

It's a relaxing leafy area that features all the green space you could ever need, including the historic Walpole Park and chilled-out Ealing Common. It's also well known for its film studios and the eponymous 'Ealing comedies' they produced, from Whisky Galore! to The Man in the White Suit.

To respect the history of Ealing, we focused on preserving as much of the original 1960s period architecture of Saunders House as possible while bringing the internal features of the space into the 21st century. We restored a rooftop terrace that hadn't been seen for years, providing a tranquil space to retreat to when needed and a great vantage point over the surrounding greenery.

Natural light permeates every single serviced office space, individually-controlled air conditioning keeps you comfortable, and an impressive design-led reception welcomes guests into the building.

Saunders House is also extremely well-connected, with nearby Ealing Broadway station giving you access to Zone 1 via the Central Line and on-site parking for those who prefer to drive.

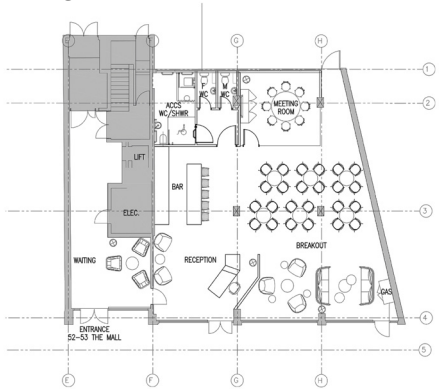


# THE BOUTIQUE COLLECTION

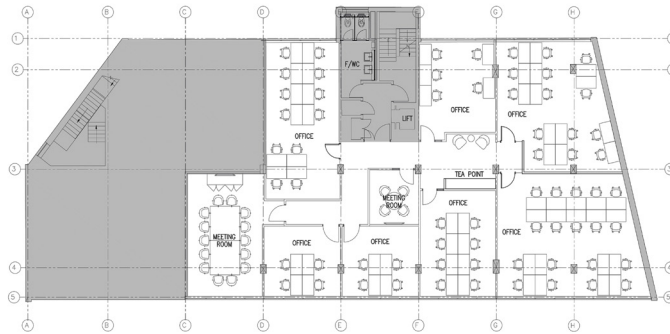
Floor Plans



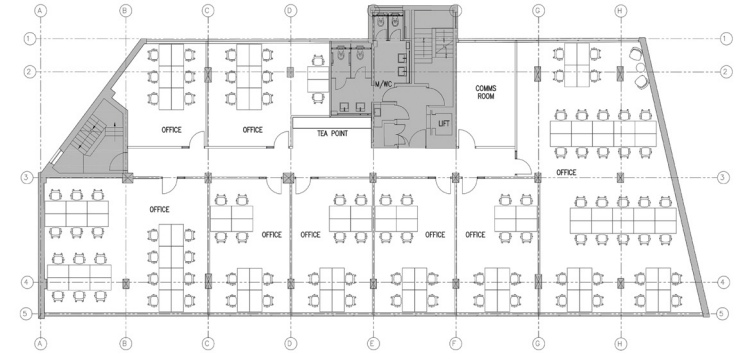
G



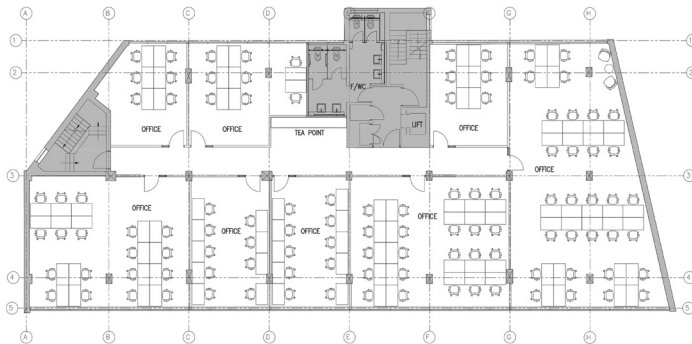
I



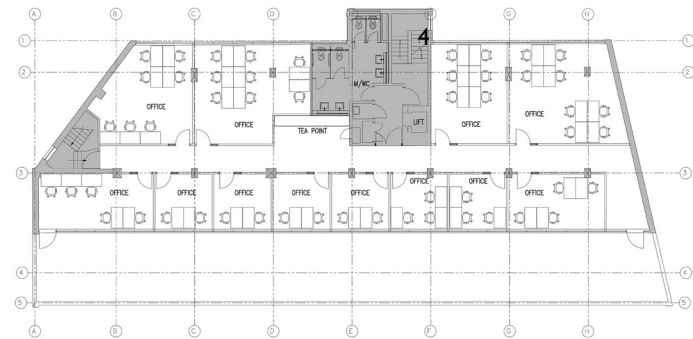
2



3



4





Aspire to be  
ordinary

## THE BOUTIQUE COLLECTION

Choose your workspace



## FEATURES AND FACILITIES

- Event space
- Dog-friendly
- Reception
- Barista-style coffee
- Business-grade fibre-optic broadband
- Rent, business rates, utilities, service charge, and building insurance
- AC air filtration and fresh airflow
- 24-hour access
- Break-out areas
- Part of The Boutique Members Club
- Roof terrace
- Showers & bike racks
- Meeting rooms
- Phone booths
- Excellent natural light
- Onsite car parking spaces available to rent
- Mailing and trading address

## CHOOSE YOUR WORKSPACE

	<b>Private Offices</b> A collection of high-quality private flexible serviced offices.
	<b>Coworking</b> A stylish coworking office you can use flexibly as the perfect alternative to coffee shop working.
	<b>Meeting Rooms</b> Thoughtfully-designed meeting rooms available on-demand.
	<b>Membership</b> This workplace is part of the Boutique Members Club, work remotely from the lounges from just £70 per month.
 	<b>Membership + Virtual Office</b> Enjoy a professional trading address with the flexibility to work in any of our Boutique Members Club lounges.
	<b>Event Space</b> Host your next event in our unique event spaces.



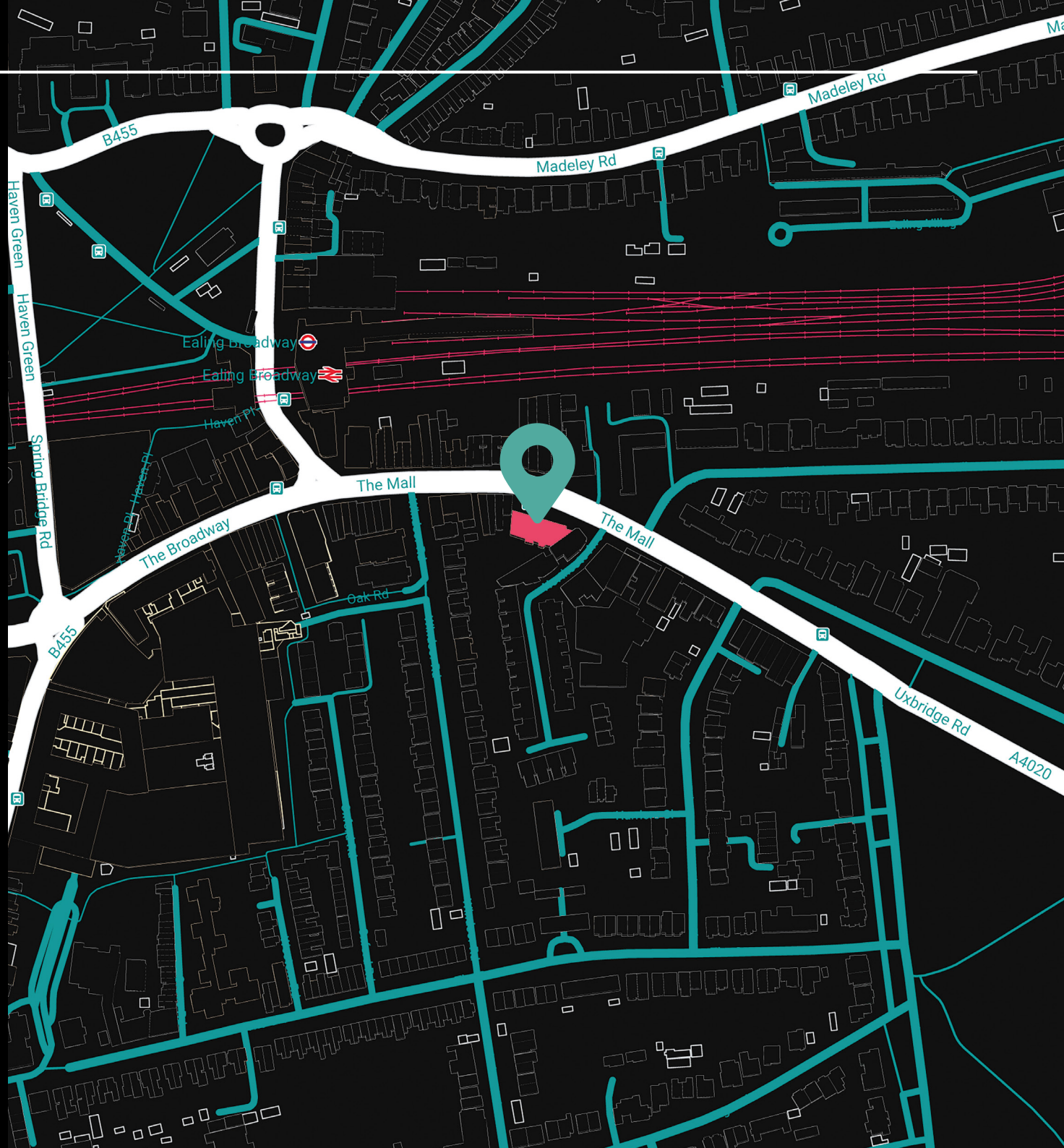
## THE BOUTIQUE COLLECTION

Map location

## LOCATION

Saunders House is just three minutes' walk from Ealing Broadway in central Ealing, meaning you can ride the central line or Crossrail directly into Zone 1 or overground to Paddington in ten minutes. International travel is also within easy reach with a direct train to Heathrow airport in 28 minutes.

There's also on site available to rent if you need it, giving drivers from nearby easy access via the A406.





## THINGS TO DO NEARBY

### UNWIND IN EALING


Thanks to Saunders House's central location, our members have a huge variety of restaurants, cafes, shops, bars, and other amenities on their doorstep, available to explore every lunchtime.

### VISIT LOCAL PARKS

On brighter days, nearby Walpole Park is a beautiful place to visit for a stroll, or if you're willing to go further afield, you can trek 30 minutes to London's Gunnersbury Park.

### WE RECOMMEND

 Grove Ealing W5

 Flame and Fire Grill



BOUTIQUE. CO  
**SAUNDERS  
HOUSE**  
EALING BROADWAY

GET IN TOUCH WITH US:

☎ 020 3405 7000

✉ [enquiries@boutique.co](mailto:enquiries@boutique.co)

FOLLOW US:



[@boutiqueworkco](https://www.instagram.com/boutiqueworkco)

[www.boutique.co](http://www.boutique.co)

